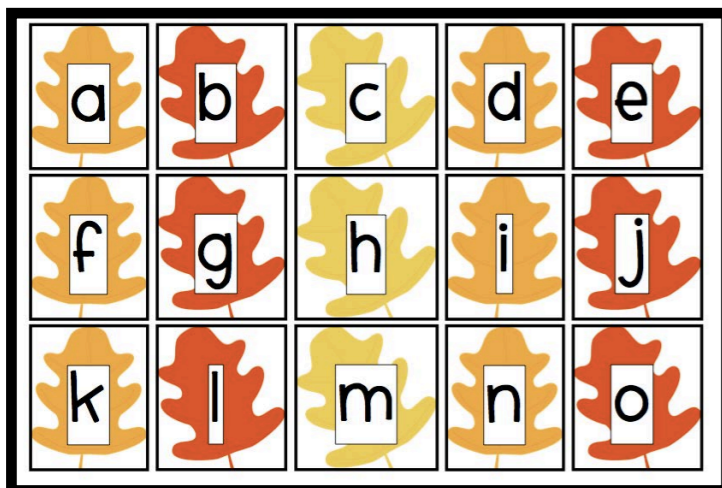
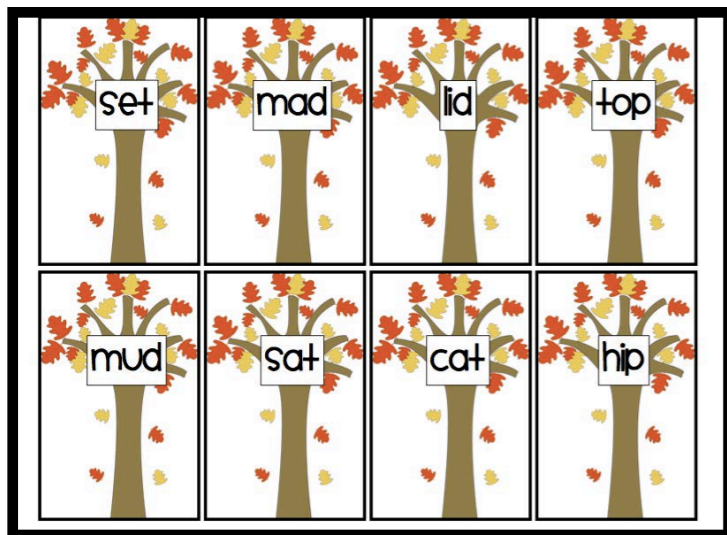
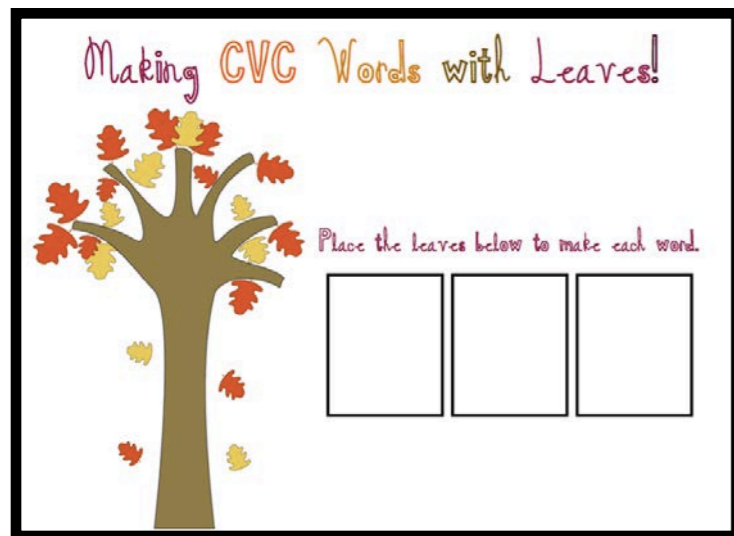


# Making CVC Words with Leaves!

## Fall Freebie



Common Core Alignment:

CCSS.ELA-Literacy.RF.K.3a Demonstrate basic knowledge of one-to-one letter-sound correspondences by producing the primary sound or many of the most frequent sounds for each consonant.

CCSS.ELA-Literacy.RF.1.3b Decode regularly spelled one-syllable words.

Teacher Directions:

Make a copy of pg. 2 and leave at center (if you have 5 kids in a center, make 5 copies) and laminate. Laminate and cut out trees and leaves on pg. 3-7. Students will choose a tree card, read the word and then use the leaves to recreate the word by placing the letters in the right order on the mat (p.2). You may want to make at least 2 copies of the leaves so multiple students can be creating words with the same letters at the same time.

Enjoy!

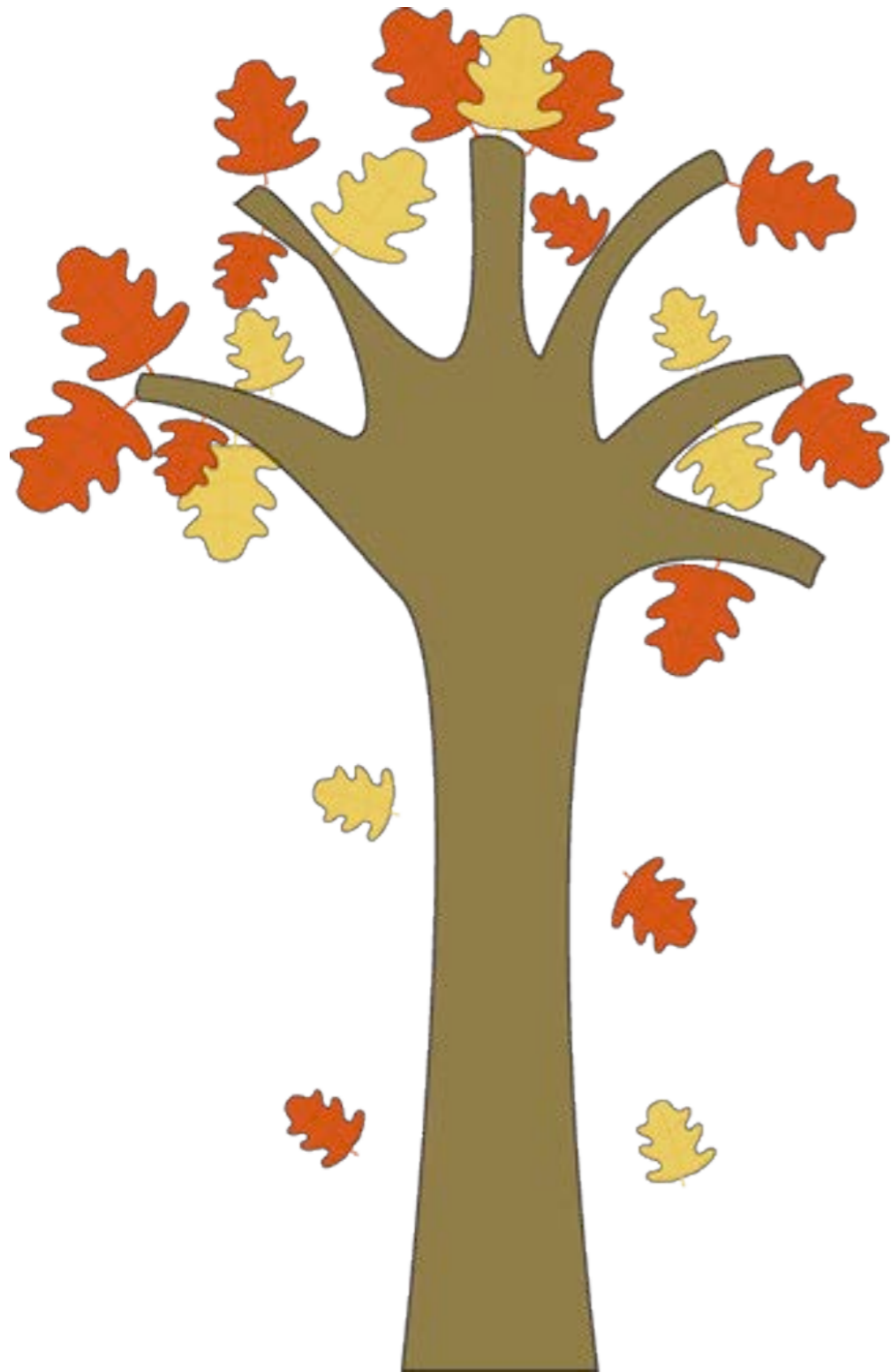
Created by: Aylin Claahsen

<http://dailylearningtothecore.blogspot.com>

Fonts by: [www.kevinandamanda.com](http://www.kevinandamanda.com)

Graphics by: [www.mycutegraphics.com](http://www.mycutegraphics.com)

# Making CVC Words with Leaves!



Place the leaves below to make each word.

--	--	--

